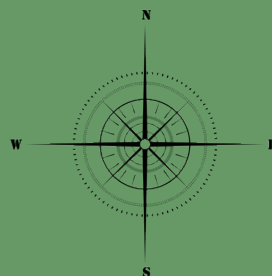


# GLASGOW REGIONAL PARK 5K



5 kilometers = 3.10685mi  
**Glasgow, Delaware**

39°36'27.49", -75°43'33.7"  
 (WGS84)



**Start:** 39° 36' 29.54", -75° 44' 8.86"

On West end of the center paved walkway, South of the tennis courts, heading West

A) 647" SSE of the SW corner of the tennis court fence post

B) 76'3" SSW of the SE corner of the tennis court fence post

**Finish:** Same as start, approaching from the West

**Mile 1:** 39° 36' 27.49", -75° 43' 33.70"

On trail heading East, just prior to East park entrance

**Mile 2:** 39° 36' 31.7", -75° 44' 5.50"

On trail heading NW, NE of the basketball courts

**Mile 3:** 39° 36' 26.53", -75° 44' 14.40"

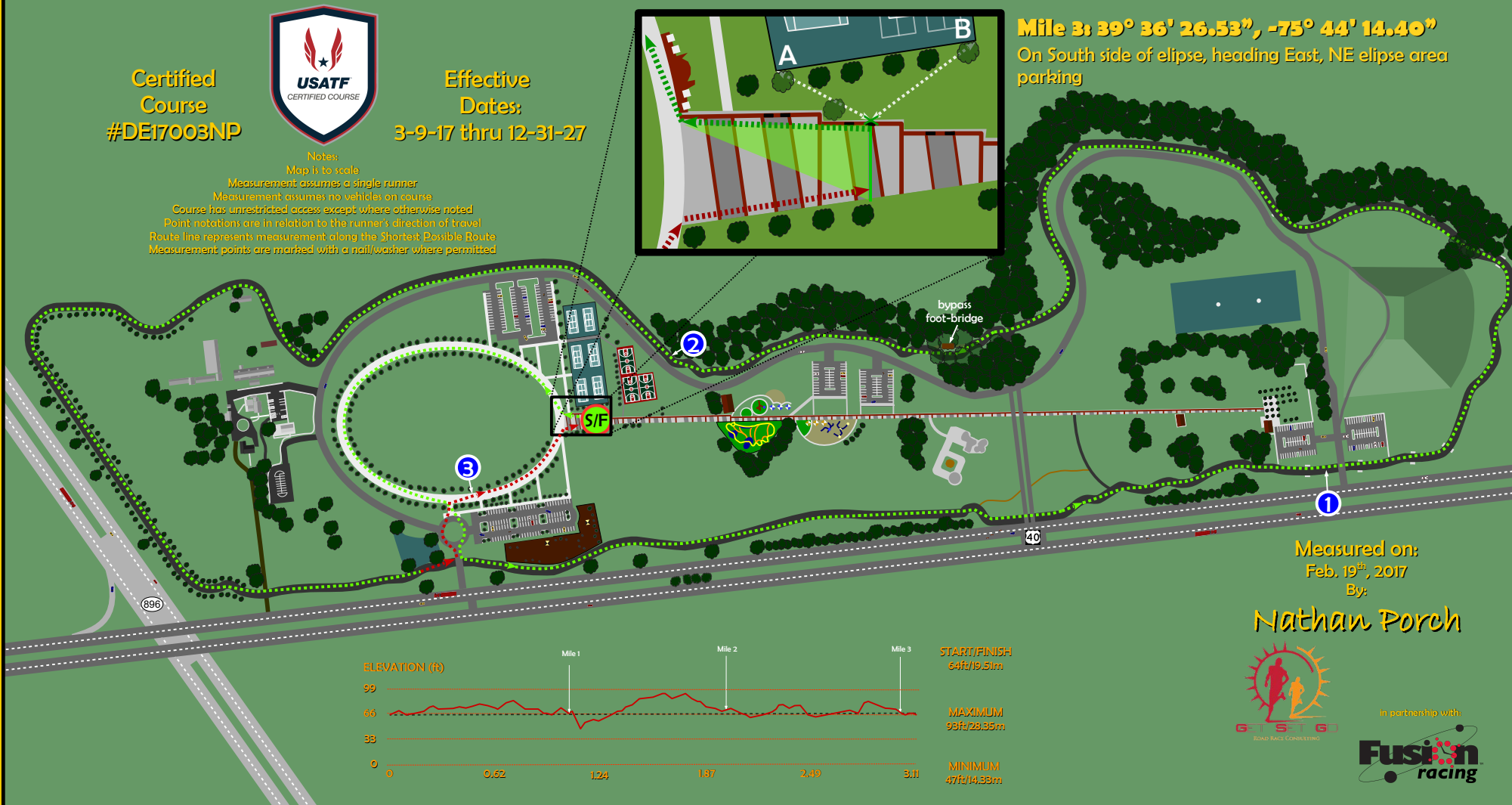
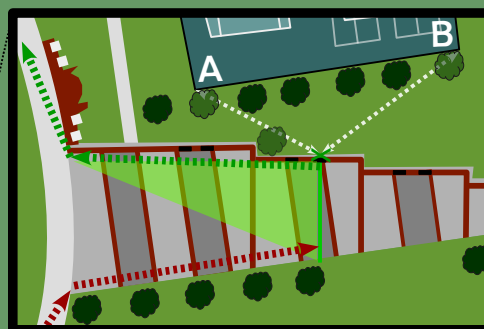
On South side of ellipse, heading East, NE ellipse area parking

Certified Course  
 #DE17003NP



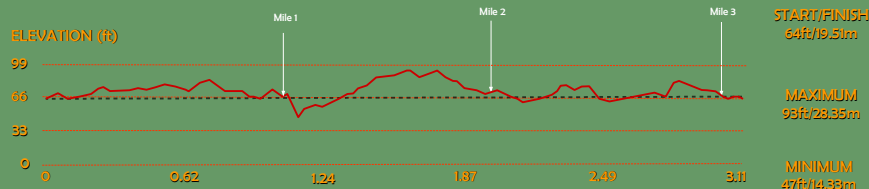
Effective Dates:  
 3-9-17 thru 12-31-27

Notes:  
 Map is to scale  
 Measurement assumes a single runner  
 Measurement assumes no vehicles on course  
 Course has unrestricted access except where otherwise noted  
 Point notations are in relation to the runner's direction of travel  
 Route line represents measurement along the Shortest Possible Route  
 Measurement points are marked with a nail/washer where permitted



Measured on:  
 Feb. 19<sup>th</sup>, 2017  
 By:

**Nathan Porch**



In partnership with:

